

UNITRON's digital microscopy cameras are specifically engineered for low light, color critical and high speed applications for industrial, inspection, forensic, material science, clinical and educational applications.

Our new HD video cameras complement our wide range of CCD and CMOS cameras offering unsurpassed image quality and high frame rates for faster inspections.

### Lumenera™



**CMOS - Color**  
 #AU-200-CMOS (2.0 MP)  
 #AU-310-CMOS (3.1 MP)  
 #AU-500-CMOS (5.0 MP)



**CCD Color or Monochrome (M)**  
 #AU-140RC-CCD (1.4 MP)  
 #AU-140RM-CCD (1.4 MP)  
 #AU-200-CCD (2.0 MP)  
 #AU-200M-CCD (2.0 MP)  
 #AU-330-CCD (3.3 MP)  
 #AU-500-CCD (5.0 MP)



**CCD USB 3.0**  
 Color (C) or Monochrome (M)  
 #AU-280C-CCD (2.8 MP)  
 #AU-280M-CCD (2.8 MP)  
 #AU-600URC-CCD (6.0 MP)  
 #AU-600URM-CCD (6.0 MP)



**CCD - Uncooled**  
 Color or Monochrome (M)  
 #AU-140UC-CCD (1.4 MP)  
 #AU-140UM-CCD (1.4 MP)



**CCD - Cooled**  
 Color or Monochrome (M)  
 #AU-140CL-CCD (1.4 MP)  
 #AU-140CLM-CCD (1.4 MP)



**Large Format CCD**  
 10.7 MP - Color or Monochrome  
 #AU-107-CCD  
 #AU-107M-CCD



**High Resolution CCD**  
 32.0 MP - Color  
 #AU-X-32C

**Micrometrics®**  
 Digital HD and  
 Mini-Automatic Digital 'Scope  
 On Reverse Side

### Cameras

Item#	Description
<b>CMOS</b>	
AU-200-CMOS	2.0 MP Color
AU-310-CMOS	3.1 MP Color
AU-500-CMOS	5.0 MP Color

<b>CCD</b>	
AU-140RC-CCD	1.4 MP Color
AU-140RM-CCD	1.4 MP Monochrome
AU-200-CCD	2.0 MP Color
AU-200M-CCD	2.0 MP Monochrome
AU-330-CCD	3.3 MP Color
AU-500-CCD	5.0 MP Color

<b>CCD-USB 3.0</b>	
AU-280C-CCD	2.8 MP Color
AU-280M-CCD	2.8 MP Monochrome
AU-600URC-CCD	6.0 MP Color
AU-600URM-CCD	6.0 MP Monochrome

<b>CCD-Uncooled</b>	
AU-140UC-CCD	1.4 MP Color
AU-140UM-CCD	1.4 MP Monochrome

<b>CCD-Cooled</b>	
AU-140CL-CCD	1.4 MP Color
AU-140CLM-CCD	1.4 MP Monochrome

<b>Large Format CCD*</b>	
AU-107-CCD	10.7 MP Color
AU-107M-CCD	10.7 MP Monochrome
*Use F-mount adapters	

<b>High Resolution CCD</b>	
AU-X-32C	32.0 MP Color

**Micrometrics®**



**Color CMOS**  
#319CU (3.2 MP)  
#519CU (5.0MP)



**Color CCD**  
#591CU (5.0 MP)  
#891CU (8.0 MP)

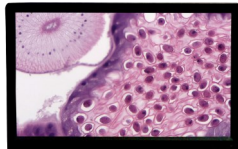
**Cameras**

Item#	Description
<b>Micrometrics®</b>	
319CU .....	3.2 MP Color CMOS
519CU .....	5.0 MP Color CMOS
591CU .....	5.0 MP Color CCD
891CU .....	8.0 MP Color CCD

**Digital HD**



**1080P HD 60fps**  
HDMI & USB  
#AU-600-HD



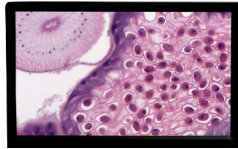
**1080P HDS 60fps / 11.6" DISPLAY**  
CAMERA & MONITOR SYSTEM  
#AU-600-HDS



*(Shown mounted on a microscope)*



**1080P HD 30fps**  
HDMI & USB  
#AU-300-HD



**1080P HDS 30fps / 11.6" DISPLAY**  
CAMERA & MONITOR SYSTEM  
#AU-300-HDS



*(Shown mounted on a microscope)*



**1080P HD 60**  
16:9 - HDMI  
#AU-200-HD

**Digital HD**

AU-600-HD .....	1080P / 60fps - HDMI & USB
AU-600-HDS .....	1080P / 60fps - HDMI & USB
AU-300-HD .....	1080P / 30fps - HDMI & USB
AU-300-HDS .....	1080P / 30fps - HDMI & USB
AU-200-HD .....	1080P - 16:9 HDMI

**Eyepiece Camera**

AU-300-EP .....	3.0 MP Color CMOS <i>Fits 23.2mm. I.D. eye tubes</i>
-----------------	---

**Mini Automatic Digital Microscope**

AU-500-MADM.....	5.0 MP Color 12x - 200x Zoom
------------------	---------------------------------

**Alternative**

**ACCU-CAM 300 Eyepiece Camera**



**USB 2.0 Mini / 3MP**  
Color CMOS  
#AU-300-EP



*(Mini USB 2.0 port for direct-connect to a PC)*

**Mini Automatic Digital 'Scope Camera**



**720P HD 30 / 5MP**  
12x - 200x Zoom  
#AU-500-MADM

