

UNITRON's digital microscopy cameras are specifically engineered for low light, color critical and high speed applications for industrial, inspection, forensic, material science, clinical and educational applications.

Our new HD video cameras complement our wide range of CCD and CMOS cameras offering unsurpassed image quality and high frame rates for faster inspections.

Lumenera®



CMOS - Color

- #AU-200-CMOS (2.0 MP)
- #AU-310-CMOS (3.1 MP)
- #AU-500-CMOS (5.0 MP)



CCD Color or Monochrome (M)

- #AU-140RC-CCD (1.4 MP)
- #AU-140RM-CCD (1.4 MP)
- #AU-200-CCD (2.0 MP)
- #AU-200M-CCD (2.0 MP)
- #AU-330-CCD (3.3 MP)
- #AU-500-CCD (5.0 MP)



CCD USB 3.0

- Color (C) or Monochrome (M)
- #AU-280C-CCD (2.8 MP)
- #AU-280M-CCD (2.8 MP)
- #AU-600URC-CCD (6.0 MP)
- #AU-600URM-CCD (6.0 MP)



CCD - Uncooled

- Color or Monochrome (M)
- #AU-140UC-CCD (1.4 MP)
- #AU-140UM-CCD (1.4 MP)



CCD - Cooled

- Color or Monochrome (M)
- #AU-140CL-CCD (1.4 MP)
- #AU-140CLM-CCD (1.4 MP)



High Resolution CCD

- 32.0 MP - Color
- #AU-X-32C



- 1080P HD 60
- 16:9 - HDMI
- #AU-200-HD

Excelis™ Camera Series and Eyepiece Camera On Reverse Side

Cameras

Item#	Description
-------	-------------

Lumenera®

CMOS

- | | |
|-------------|--------------|
| AU-200-CMOS | 2.0 MP Color |
| AU-310-CMOS | 3.1 MP Color |
| AU-500-CMOS | 5.0 MP Color |

CCD

- | | |
|--------------|-------------------|
| AU-140RC-CCD | 1.4 MP Color |
| AU-140RM-CCD | 1.4 MP Monochrome |
| AU-200-CCD | 2.0 MP Color |
| AU-200M-CCD | 2.0 MP Monochrome |
| AU-330-CCD | 3.3 MP Color |
| AU-500-CCD | 5.0 MP Color |

CCD-USB 3.0

- | | |
|---------------|-------------------|
| AU-280C-CCD | 2.8 MP Color |
| AU-280M-CCD | 2.8 MP Monochrome |
| AU-600URC-CCD | 6.0 MP Color |
| AU-600URM-CCD | 6.0 MP Monochrome |

CCD-Uncooled

- | | |
|--------------|-------------------|
| AU-140UC-CCD | 1.4 MP Color |
| AU-140UM-CCD | 1.4 MP Monochrome |

CCD-Cooled

- | | |
|---------------|-------------------|
| AU-140CL-CCD | 1.4 MP Color |
| AU-140CLM-CCD | 1.4 MP Monochrome |

High Resolution CCD

- | | |
|----------|---------------|
| AU-X-32C | 32.0 MP Color |
|----------|---------------|

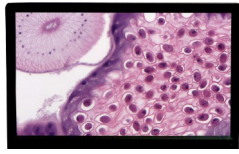
1080P HD 60

- | | |
|-----------|-----------------|
| AU-200-HD | 1080P—16:9 HDMI |
|-----------|-----------------|

Excelis™



1080P HD 60fps
HDMI & USB
#AU-600-HD



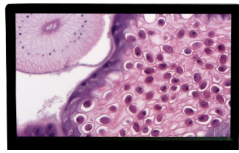
1080P HDS 60fps / 11.6" DISPLAY
CAMERA & MONITOR SYSTEM
#AU-600-HDS



(Shown mounted on a microscope)



1080P HD 30fps
HDMI & USB
#AU-300-HD



1080P HDS 30fps / 11.6" DISPLAY
CAMERA & MONITOR SYSTEM
#AU-300-HDS



(Shown mounted on a microscope)



16MP Color CMOS
USB 3.0
#AU-16-CMOS
(MPX-16C)

Cameras

Item#	Description
Digital HD	
AU-600-HD	1080P / 60fps - HDMI & USB
AU-600-HDS	1080P / 60fps - HDMI & USB
AU-300-HD	1080P / 30fps - HDMI & USB
AU-300-HDS	1080P / 30fps - HDMI & USB
AU-600-CMOS.....	16MP Color CMOS - USB 3.0

Eyepiece Camera

AU-300-EP	3.0 MP Color CMOS <i>Fits 23.2mm. I.D. eye tubes</i>
-----------------	---

Eyepiece Camera

ACCU-CAM 300 Eyepiece Camera



USB 2.0 Mini / 3MP
Color CMOS
#AU-300-EP



(Mini USB 2.0 port for direct-connect to a PC)