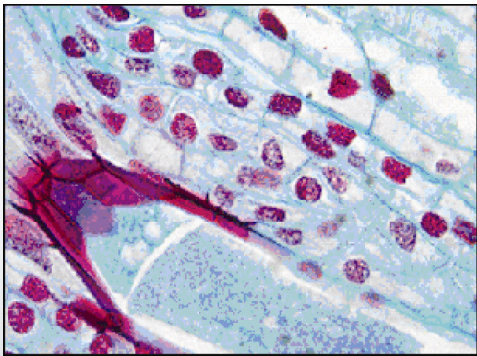


# AU-330-CCD DIGITAL MICROSCOPY CAMERA

The 3.3 megapixel color camera offers excellent sensitivity and high resolution. This is an ideal camera for brightfield, darkfield, and DIC imaging applications where higher resolution archiving and a wide dynamic range are routinely required.

With 2080x1536 resolution and onboard processing, the AU-330-CCD delivers outstanding image quality for a wide variety of scientific applications.



Live video preview provides for real-time focus while auto exposure and auto white balance efficiently capture your optimal image. An intuitive user application provides camera controls while full integration to popular third-party imaging applications is available through our TWAIN drivers.

The USB 2.0 digital interface ensures a simple plug and play installation – and one standard cable minimizes camera clutter. No framegrabber required.

Every INFINITY AU camera includes **INFINITY ANALYZE** software for advanced camera control, image processing, measuring and annotation, and is supported by an experienced team of technical support and imaging experts. We understand your imaging needs and are here to help you get the most out of your camera.



## Performance Features

- The high-speed USB 2.0 interface eliminates a framegrabber and facilitates ease of installation on both laptop and desktop computers
- The low noise characteristic of the AU-330-CCD, 3.3 megapixel image sensor results in crisp color quality for the most demanding brightfield and darkfield microscopy applications including clinical pathology and cytology, histology, life science and geology
- Full color sub-windowing allows for rapid focus and scanning of samples: 5 fps at full 2080X1536 resolution
- Select 8 and 12-bit pixel data modes
- The RGB data captured through each pixel contains 36-bits of color image information resulting in 4096 intensity values
- Camera control through an intuitive user TWAIN interface results in rapid image capture archiving and documentation for high throughput applications, demanding research environments and teaching facilities
- The AU-330-CCD has a compact design equipped with a C-Mount, facilitating installation on all microscope configurations including upright, inverted and stereo
- AU INFINITY cameras are software compatible with Windows™ 98 SE, Windows ME, Windows 2K and Windows XP operating systems

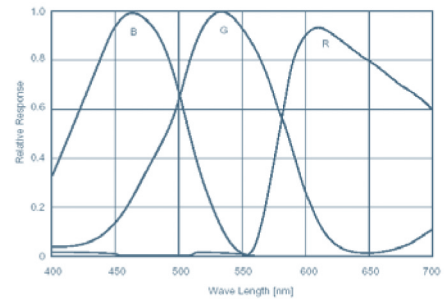
**ACCU-SCOPE®**  
*Quality thru Vision*

**UNITRON®**  
EXCELLENCE BY DESIGN  
SINCE 1952

# Specifications — AU-330-CCD

## Camera Sensor

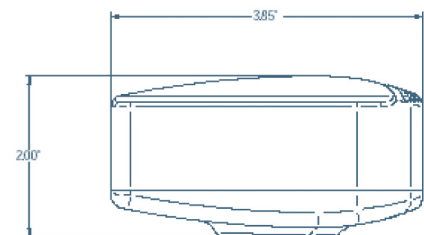
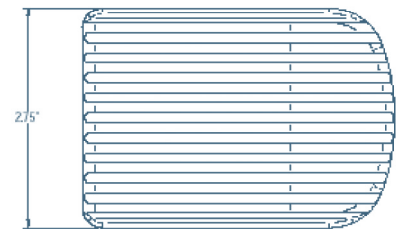
<b>Image Sensor</b>	1/1.8" Interline Sony ICX262 3.3 megapixel color progressive scan CCD sensor
<b>Effective Pixels</b>	2080x1536, 3.45µm square pixels
<b>Frame Rate</b>	5 fps at full resolution, higher fps with binning and ROI
<b>Signal/Noise</b>	>66dB
<b>Digital Output</b>	8 and 12-bit
<b>Read Noise</b>	12 e- rms
<b>Dimensions (W x H x D)</b>	2.25 x 3.85 x 1.56 inches (enclosed)



Color Response Curve

## Camera Controls

<b>Mass</b>	~300g
<b>Power Requirement</b>	USB bus power, or external 5VDC - 500mA
<b>Power Consumption</b>	~2.5Watts
<b>Operating Temperature</b>	0° C to +50° C
<b>Operating Humidity</b>	5%-95%, Non-condensing
<b>Integration Time</b>	1/1000 to 16 sec.
<b>Shutter</b>	Interlaced
<b>ROI</b>	User Selectable through mouse click and drag
<b>Auto Exposure</b>	Automatic / Manual
<b>White Balance</b>	Automatic / Manual
<b>Gain</b>	Programmable / 1 to 10x optimizable
<b>Interface Connector</b>	Standard USB 2.0 high-speed interface
<b>Dimensions (L x W x H)</b>	3.85 x 2.00 x 2.75 inches
<b>Lens Mount</b>	C-Mount lens adapter
<b>Binning Options</b>	2x2, 3x3, 4x4



*Design, features and specifications are subject to change without notice.*

### Recommended PC Specs:

- Pentium 4, 1.3 GHz or higher
- 512MB RAM
- 60 MB hard drive free space or more
- USB 2.0 Port
- Windows 2000, XP, Vista, or 7

### Minimum PC Specs:

- 600 MHz Processor
- 256 MB of SDRAM
- 20 MB hard drive free space
- USB 2.0 Port
- Windows 98 or ME

### Product Includes:

- AU-330-CCD INFINITY digital camera for USB 2.0
- CD-ROM with INFINITY user application software
- TWAIN driver
- Documentation
- USB 2.0 cable

## Mac Plug-In Available

- A Mac Plug-In for all ACCU-SCOPE/UNITRON cameras is now available
- Compatible with Mac OS 10.4 (requires Quick Time V7)
- Contact ACCU-SCOPE/UNITRON to download the latest version



### ISO 9001 Certification

Design and production adheres to ISO9001 international quality standard.

### ISO 14001 Certification

Design and production meets the requirements of international standard ISO 14001 for environmental management.



73 Mall Drive • Commack, NY 11725  
631-864-1000 (P) • 631-543-8900 (F)

email: [info@accu-scope.com](mailto:info@accu-scope.com)  
email: [info@unitronusa.com](mailto:info@unitronusa.com)

[www.accu-scope.com](http://www.accu-scope.com) • [www.unitronusa.com](http://www.unitronusa.com)

